

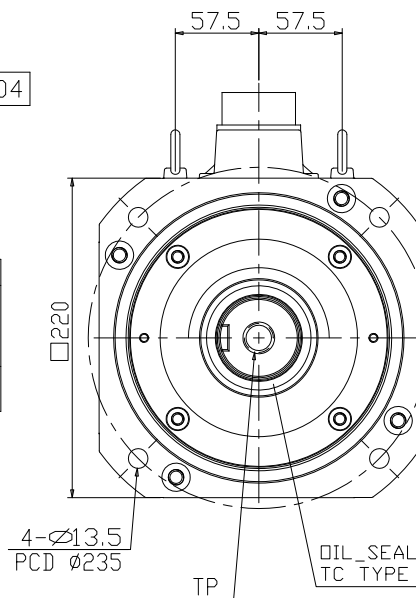
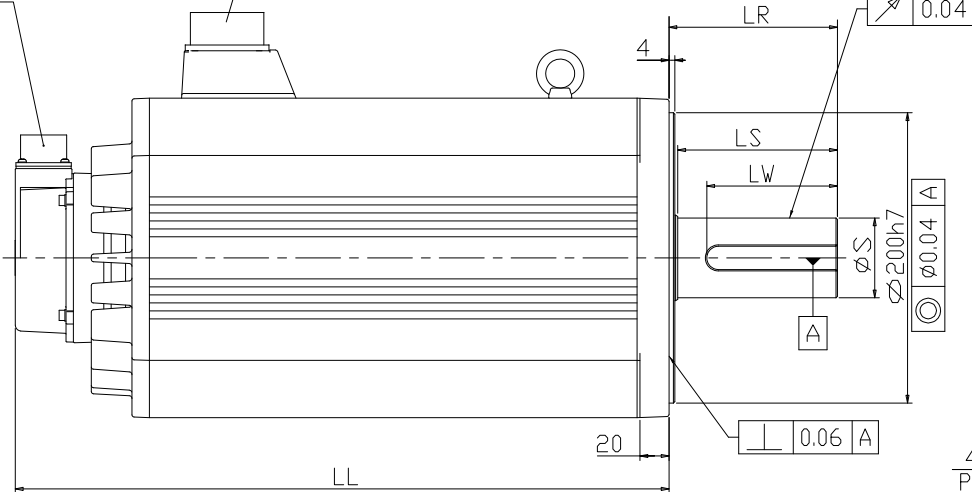
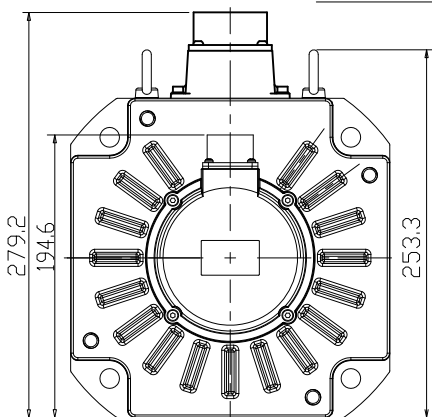
1

2

3

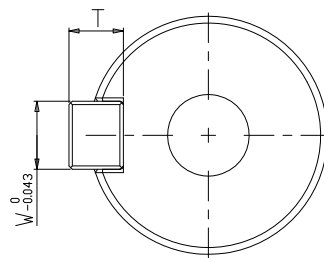
4

REV. ECN NO.

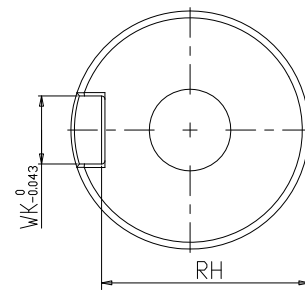
ENCODER CONNECTOR
MS3102A20-29PMOTOR CONNECTOR
MS3102A32-17P

DIMENSION TABLE (MODEL WITHOUT BRAKE)

MODEL	LL	LR	LS	LW	S	WK	W	T	RH	TP
ECMA-L□221BR3	371.4	116	110	90	42 ⁰ _{-0.016}	12	12	8	37	M16,DEPTH 32



KEY DETAILS



SHAFT END DETAILS

台達電子工業股份有限公司
DELTA ELECTRONICS, INC.

DRAWN:

DESIGN:

APPROVE:

DATE: 06/02/2015

THESE DRAWINGS AND SPECIFICATIONS ARE THE PROPERTY OF DELTA ELECTRONICS, INC. AND SHALL NOT BE REPRODUCED OR USED AS THE BASIS FOR THE MANUFACTURE OR SELL OF APPARATUS OR DEVICES WITHOUT PERMISSION.

DIMENSIONAL TOLERANCES		ANGLES	
DECIMALS	<50 ±0.1	<50 ±0.15	<50 ±0.2
X	±0.3	>50-100 ±0.15	>50-100 ±0.2
X.X	±0.2	>100-200 ±0.2	>100-200 ±0.25
X.XX	±0.1	>200 ±0.2	>200 ±0.25

DESCRIPTION: ECMA-LX221BR3

CONFIDENTIAL

A3 PART NO.:

THIRD ANGLE PROJECTION

USED ON

UNIT

mm

SCALE

SHEET 1 OF 1

REV.

00

2

3

4

1					2					3					4				
A <																			

DRAWN: ADONI. CHAO

DESIGN: ADONI. CHAO

APPROVE:

DATE: 2016/5/16

DESCRIPTION

ECMA-L1221B

PART NO.

REV. X00

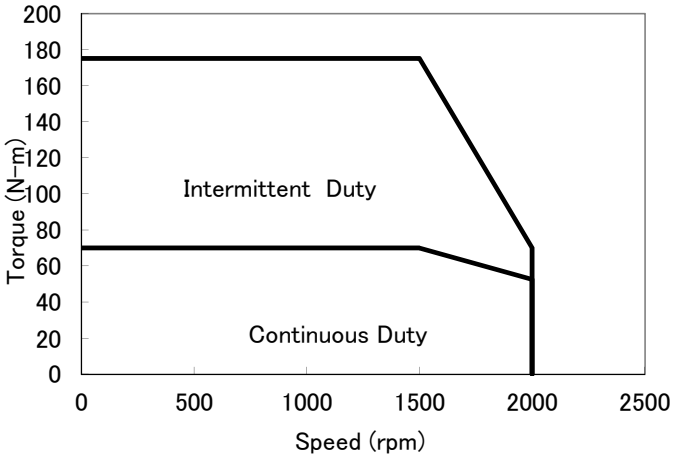


Fig. 1 T-N Curve